

---

FOR LEASE

**9301 TAMPA AVE,  
NORTHRIDGE, CA.**

SEC Shirley AVE AND PLUMBER STREET

---

## 9301 TAMPA AVE. NORTHRIDGE, CA

---

- Featuring a 61,604 SF Space on a 1.57- acre lot.
- Tenants located within include: JCPenney, Dick's Sporting Goods, EOS Fitness, Apple Store, H&M, Banana Republic, Abercrombie & Fitch, Sephora, AMC Theatres, and Dining Options.
- Close access to the 118 and 405 freeways.
- The Metrolink Northridge Station is located within 1.5 miles.
- Located near residential communities in a proven trade area along with California State Northridge nearby.

PLUMMER STREET-28,080

TERRENA  
APARTMENT HOMES

Burlington

CORNER  
BAKERY

LONGHORN  
STEAKHOUSE

Firestone  
COMPLETE AUTO CARE

SK  
SUPER KING

DSW  
KIDS EMPIRE

ROSS  
DRESS FOR LESS

SITE LOCATION  
-61,604 SF

WOOD RANCH

Yard House

Red Robin

AMC  
THEATRES



H&M



CLUB LAGREE

TAMPA AVE - 38,632

THE VILLAGE  
AT NORTHRIDGE

JCPenney

LOWE'S

SYMMETRY APARTMENTS

E55 FITNESS

DICK'S  
SPORTING GOODS

ASHLEY

The KEBAB SHOP

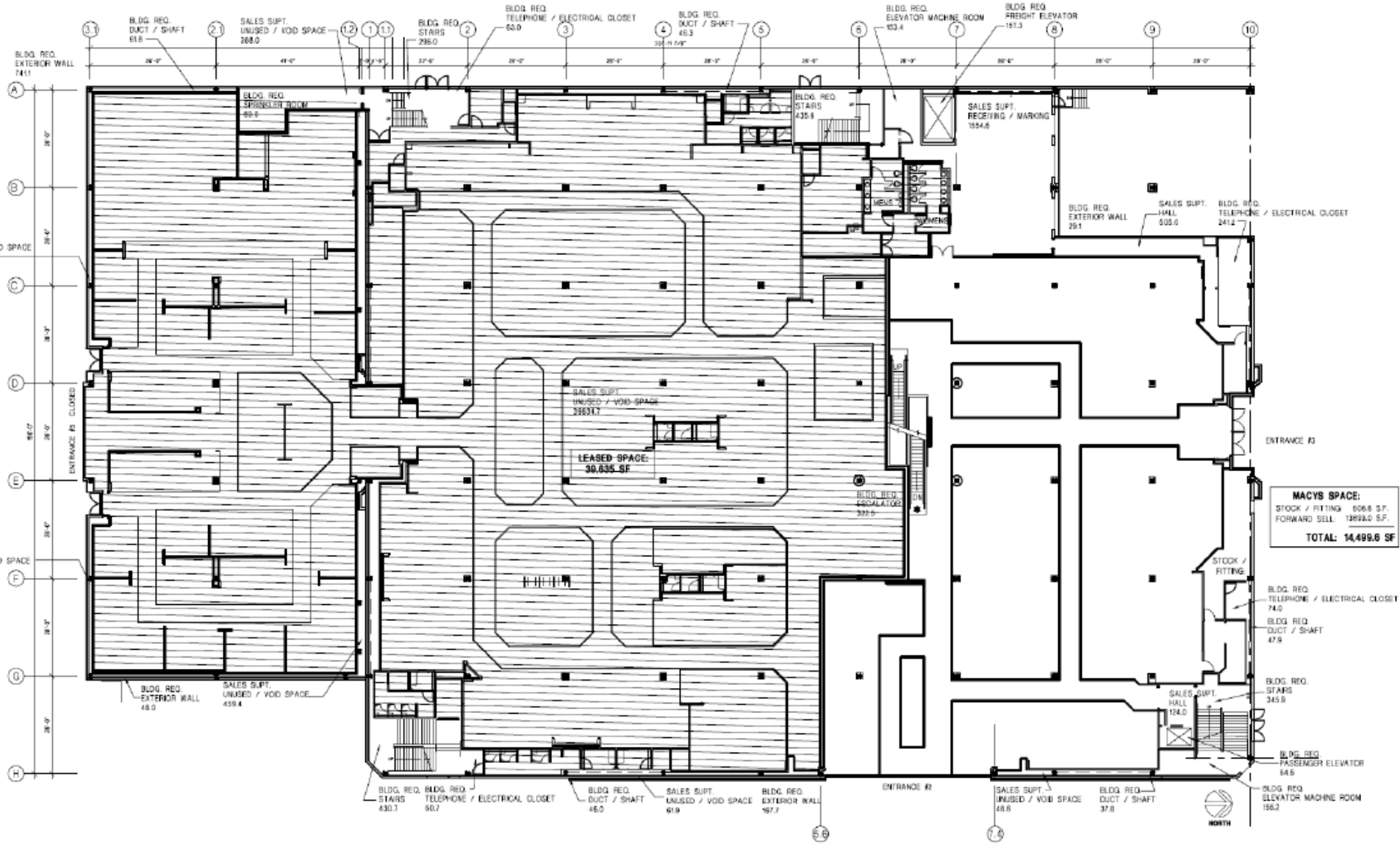
burgerlounge



A  
E  
R  
I  
A  
L  
V  
I  
E  
W



# SITE PLAN



**MACYS SPACE:**  
 STOCK / FITTING 606.8 SF.  
 FORWARD SELL 13893.0 SF.  
**TOTAL: 14,499.8 SF**

# EXPANDED DEMOGRAPHIC PROFILE

Estimated 2025

9301 TAMPA AVE | NORTHRIDGE, CA

POPULATION	1 MILE	3 MILES	5 MILES
Estimated Population	17,526	210,771	486,365
Estimated Population (2030)	18,014	209,000	482,576
HOUSEHOLDS	1 MILE	3 MILES	5 MILES
Households	6,540	72,155	169,482
AVERAGE HH INCOME	1 MILE	3 MILES	5 MILES
Estimated Average HH Income	149,147	135,211	137,548
Estimated Average HH Income (2030)	167,772	153,195	155,033
MEDIAN HH INCOME	1 MILE	3 MILES	5 MILES
Estimated Median HH Income	110,259	99,008	101,183
Estimated Median HH Income (2030)	128,426	112,415	114,579
PER CAPITA INCOME	1 MILE	3 MILES	5 MILES
Estimated Per Capita Income	55,810	46,222	48,043
Estimated Per Capita Income (2030)	64,434	53,515	55,354

## LEASING:



### **CAROL SPRINGSTEAD**

CA DRE #01082067

949.797.9040

[cspringstead@springstead-associates.com](mailto:cspringstead@springstead-associates.com)

### **KARINA ROSTOMIANI**

CA DRE #02073753

949.797.9040

[karina@springstead-associates.com](mailto:karina@springstead-associates.com)

### **TRAVIS BELL**

CA DRE #02241394

949.797.9040

[travis@springstead-associates.com](mailto:travis@springstead-associates.com)